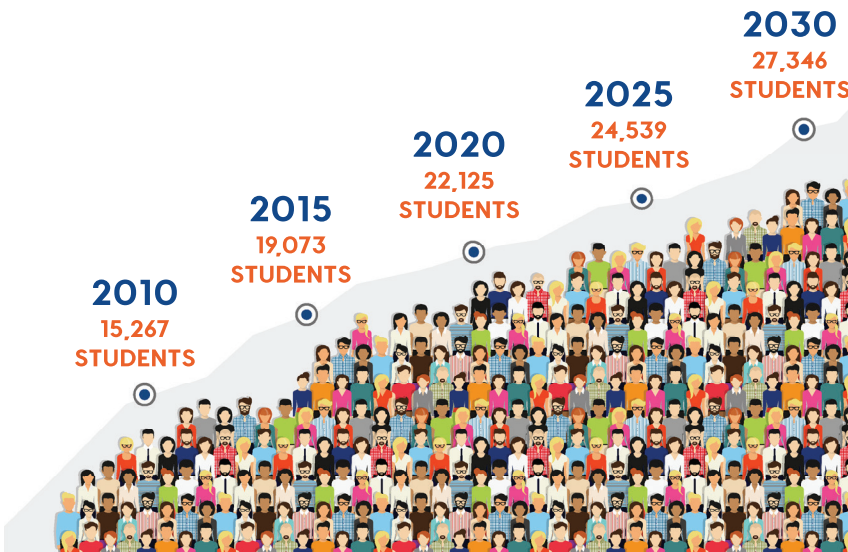


WHY IS OLENTANGY ON THE BALLOT?

UNPRECEDENTED GROWTH CONTINUES

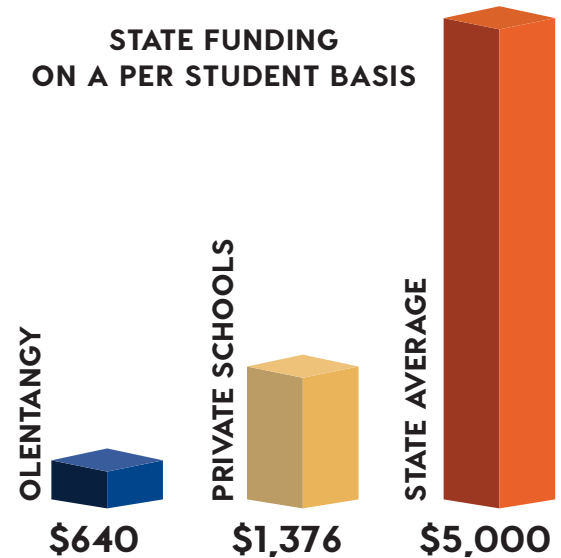


Source: Olentangy Facilities Committee's 9/26/19 Enrollment Report

So many of us moved here for Olentangy Schools. Olentangy has added 6,800+ students in the past decade. An additional 5,200+ more students are projected to be added in the next decade.

OLENTANGY RECEIVES ROCK-BOTTOM STATE FUNDING

STATE FUNDING ON A PER STUDENT BASIS



Source: Ohio Department of Education

Only 6% of Olentangy's budget comes from the state. On a per student basis, Olentangy receives less than half of what private schools receive from the state.

THE OLENTANGY WE KNOW IS THE RESULT OF YEARS OF SUPPORT AT THE BALLOT BOX.

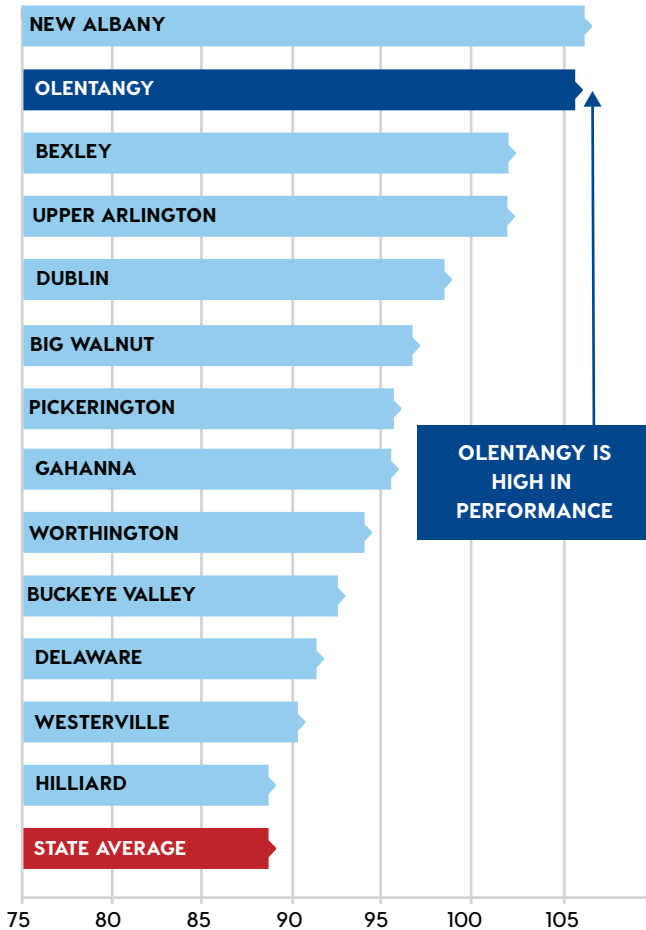


IT'S UP TO US ON MARCH 17
TO ENSURE OUR SCHOOLS MAINTAIN THEIR EXCELLENCE

STILL THE BEST BANG FOR YOUR BUCK

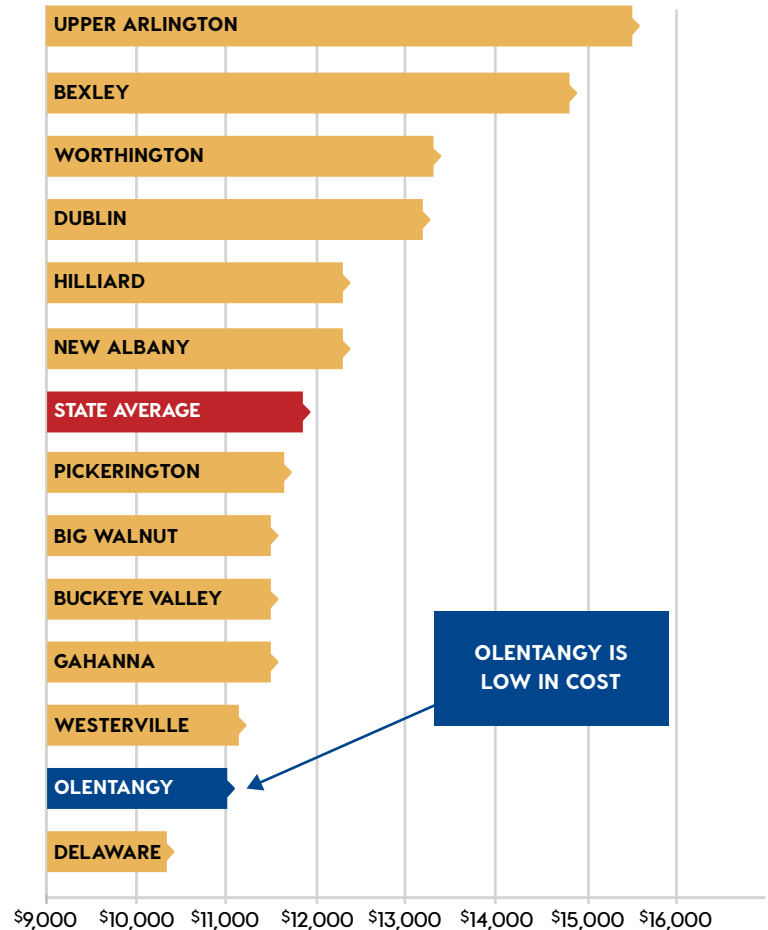
Olentangy *performs at a higher level* yet *spends less per student*.
Olentangy residents receive an excellent return on investment!

PERFORMANCE INDEX



Source: Ohio Department of Education data available as of 12/1/2019

COST PER STUDENT



Source: Ohio Department of Education data available as of 12/1/2019

The Olentangy staff works diligently to keep costs down. Additionally, the Finance and Audit Committee, comprised of taxpayers, focuses on the district's stewardship of funds.

WHAT YOUR INVESTMENT PROVIDES FOR OLENTANGY STUDENTS

- Two elementary schools to open August 2021 and August 2023
- One middle school to open August 2023
- Security vestibules at all building entrances
- Playground updates to meet current ADA compliance and soft surfaces to replace gravel
- Continued bus service for students who currently ride the bus
- Continued excellence for ALL students

Note: For the full bond package list, go to www.olentangyforkids.org

WHAT'S AT STAKE?

"If this levy fails, we wake up to a very different Olentangy - we absolutely cannot maintain the quality of our school district without the passage of this issue," *Mark T. Raiff, Superintendent*

OLENTANGY TODAY	AFTER A YES VOTE	AFTER A NO VOTE
→ 15 elementary and 5 middle school buildings that will not have enough classroom space within the next few years.	✓ 1st new elementary will open August 2021; 2nd new elementary and new middle school will open August 2023. Current class sizes should be maintained .	✗ Increasing class sizes by 5-6 students across all grade levels because hiring teachers will not keep up with growth.
→ Academic excellence which includes robust high school electives, AP courses and gifted services .	✓ Academic excellence and robust offerings continue. Gifted services continue.	✗ Significant reduction in academic programs at high schools, including electives, which are likely to result in a shortened school day. Gifted services K-12 at risk for reduction or elimination.
→ Robust opportunities in high school and middle school extracurricular activities .	✓ Continued extracurricular opportunities at high schools and middle schools.	✗ Elimination of middle school extracurriculars including all sports. Reductions in high school extracurriculars.
→ Additional buses are needed to keep up with growth.	✓ Buses needed due to growth can be purchased .	✗ Nearly half of all current bus riders will lose bus service when state minimums are applied.
→ Playgrounds that do not meet current ADA compliance .	✓ All children will be able to play on their playgrounds; improved safety with soft surfaces replacing gravel.	✗ No improved safety or access on playgrounds.
→ 8 of the 25 buildings currently have entrances that meet best safety practices .	✓ All school buildings will have best safety practices and standards met for more secure entrances.	✗ School buildings will not have upgraded security at entrances.

These are the realities the district will face if additional funding from this levy is not approved. It would be unfair to us if the district didn't share what's at stake if this levy were to fail.

IT'S UP TO US! VOTE YES ON MARCH 17!

1 VOTE WITH THREE PARTS

OPERATING LEVY 7.4 MILLS

Operate existing twenty-five buildings.
Operate two new elementary schools
and one new middle school.

PERMANENT IMPROVEMENT 0.5 MILLS

Dedicated funds to repair and
maintain buildings.
Provide updated technology to
prepare students for the future.

BOND NO ADDITIONAL MILLAGE

The bond issue will be on the ballot
for 1.7 mills. However, there will be
NO tax rate increase from the bond.

COST OF \$277 PER \$100,000 OF HOME VALUATION

MYTHS AND FACTS REGARDING OLENTANGY SCHOOLS

- *Myth: We already pay more taxes than people in neighboring school districts.*
Fact: In 2019 Olentangy residents paid less in school taxes when calculated per \$100,000 of home valuation than Dublin, Bexley, Delaware City, Hilliard, Pickerington and Worthington, among others.
- *Myth: If we reject this ballot issue, we'll get the state's attention and they'll give us more funding.*
Fact: School districts with far less wealth have failed multiple levies and the state has not stepped in. We will only be hurting ourselves by reducing property values and risking the excellent education currently provided by our schools.
- *Myth: The taxes from new homes should be enough to pay for the enrollment growth.*
Fact: Taxes from new home construction do not cover the cost of building new schools, and in most cases they don't even cover the cost to educate the additional students. The average value of a home in Olentangy is \$358,700 which generates \$6,071 annually in school taxes. It costs the district \$11,007 to educate each student.
- *Myth: The district can stop growth.*
Fact: Each municipality controls the zoning for their area. School districts cannot control the enrollment growth that comes in - local governments do. Olentangy Schools is located within 7 townships, 4 cities and 2 counties.
- *Myth: If we stop offering preschool, we won't need to build more elementary schools.*
Fact: The state requires all public school districts to educate students with disabilities at the preschool level.

ADDITIONAL DETAILS CAN BE FOUND AT: OLENTANGYFORKIDS.ORG

✉ info@olentangyforkids.org  Olentangy for Kids  OlentangyForKids  @Olentangy4Kids

**Deadline to Register to Vote: February 18. Go to: olvr.ohiosos.gov
Early Voting Begins: February 19 | Election Day: March 17**

**BE A PART OF THE SOLUTION THAT PROTECTS OLENTANGY'S EXCELLENCE!
VOTE YES ON MARCH 17!**

Paid for by Olentangy For Kids